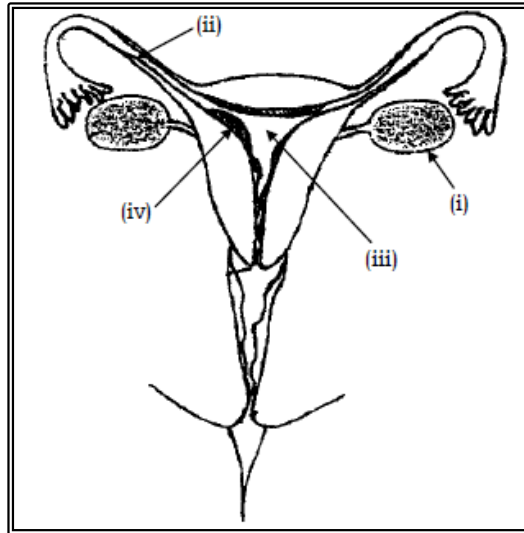


MINISTRY OF EDUCATION, HERITAGE AND ARTS
YEAR 10 BASIC SCIENCE
REVISION WORKSHEET 9

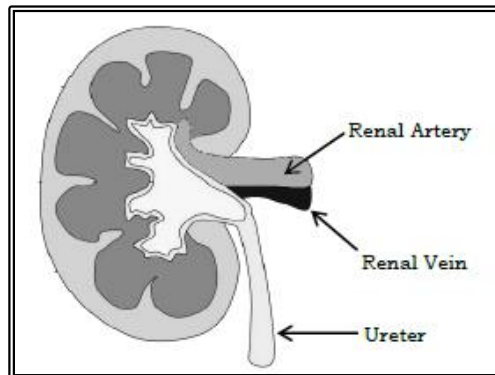
Write the answers to the following questions in your exercise/activity books.

1. The diagram given below shows the female reproductive system.



Source: <https://www.pinterest.com/>

- i. Name the parts labelled (i) – (iv). **(4 marks)**
ii. State the functions of parts labelled (i) – (iv). **(4 marks)**
2. The diagram given below shows the structure of a human kidney.



Adapted from: <http://www.i.b.bioninja.com.au>

- i. Name the three main types of excretory products excreted by living beings. **(3 marks)**
ii. Name two products that are reabsorbed by the kidneys. **(2 marks)**
iii. Explain the difference in the composition of the blood entering and leaving the kidneys. **(2 marks)**

The End